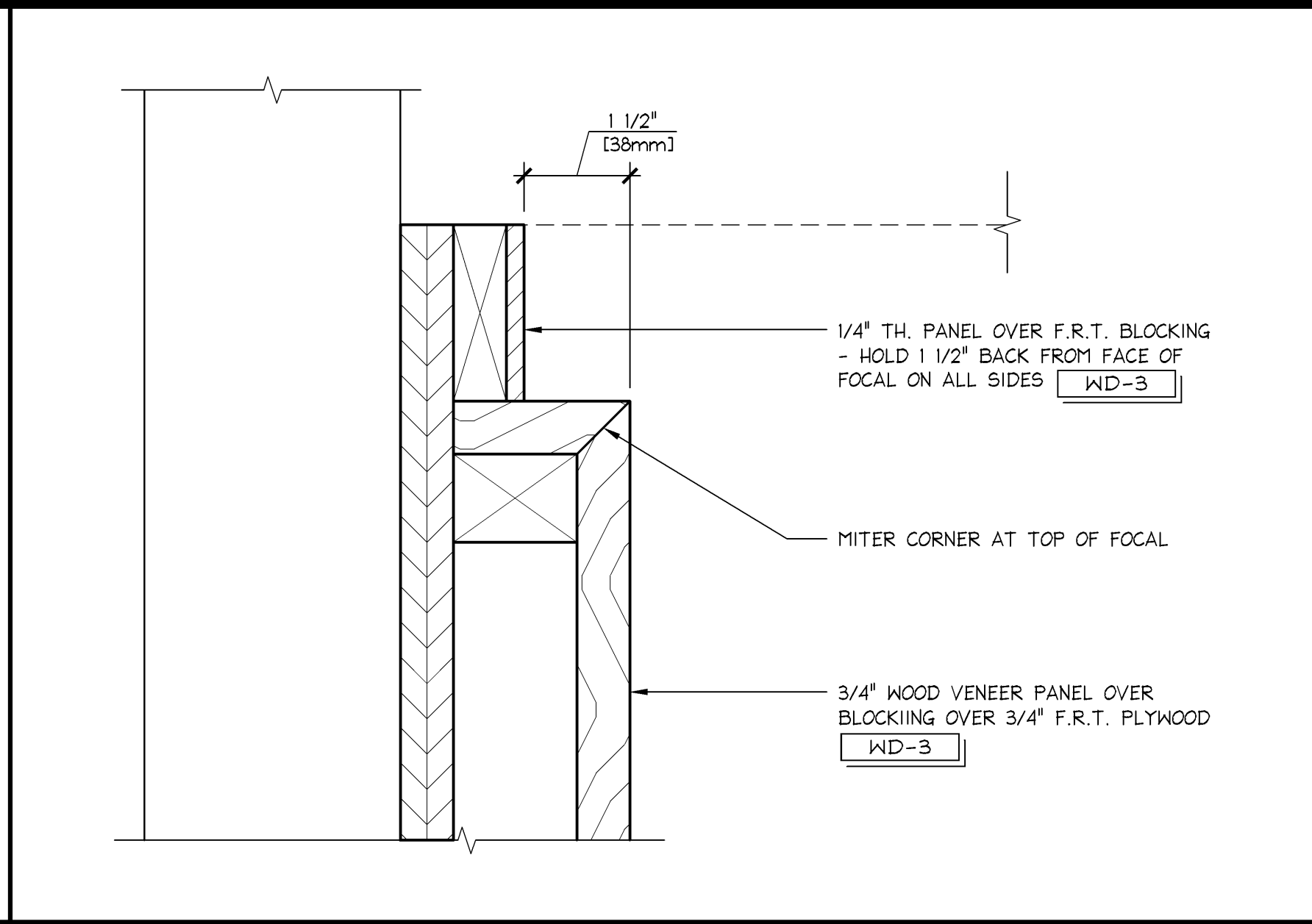


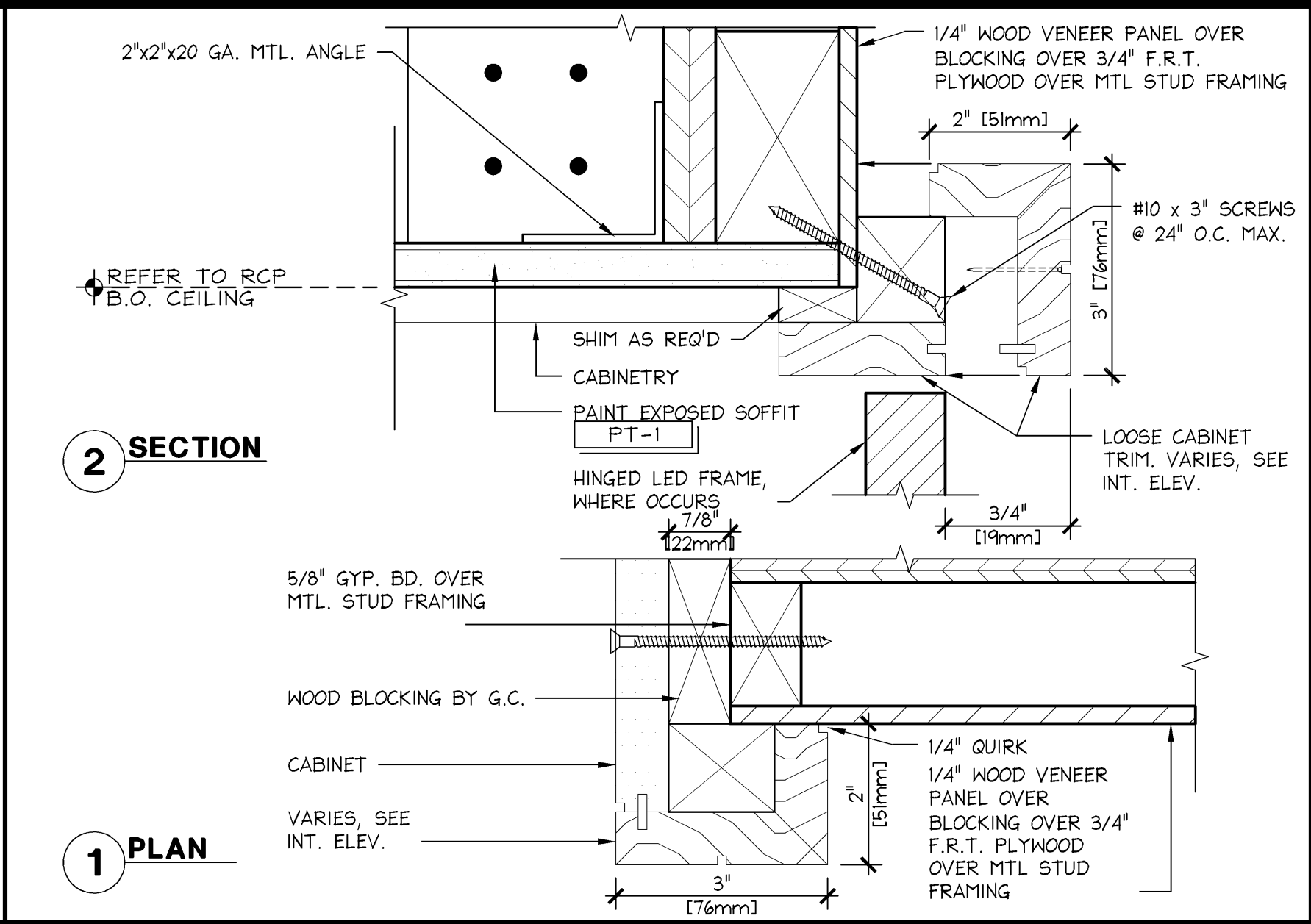
ISOMETRIC @ TOP CORNER

N.T.S.
42D-A102-800-DETL
02.11.2013



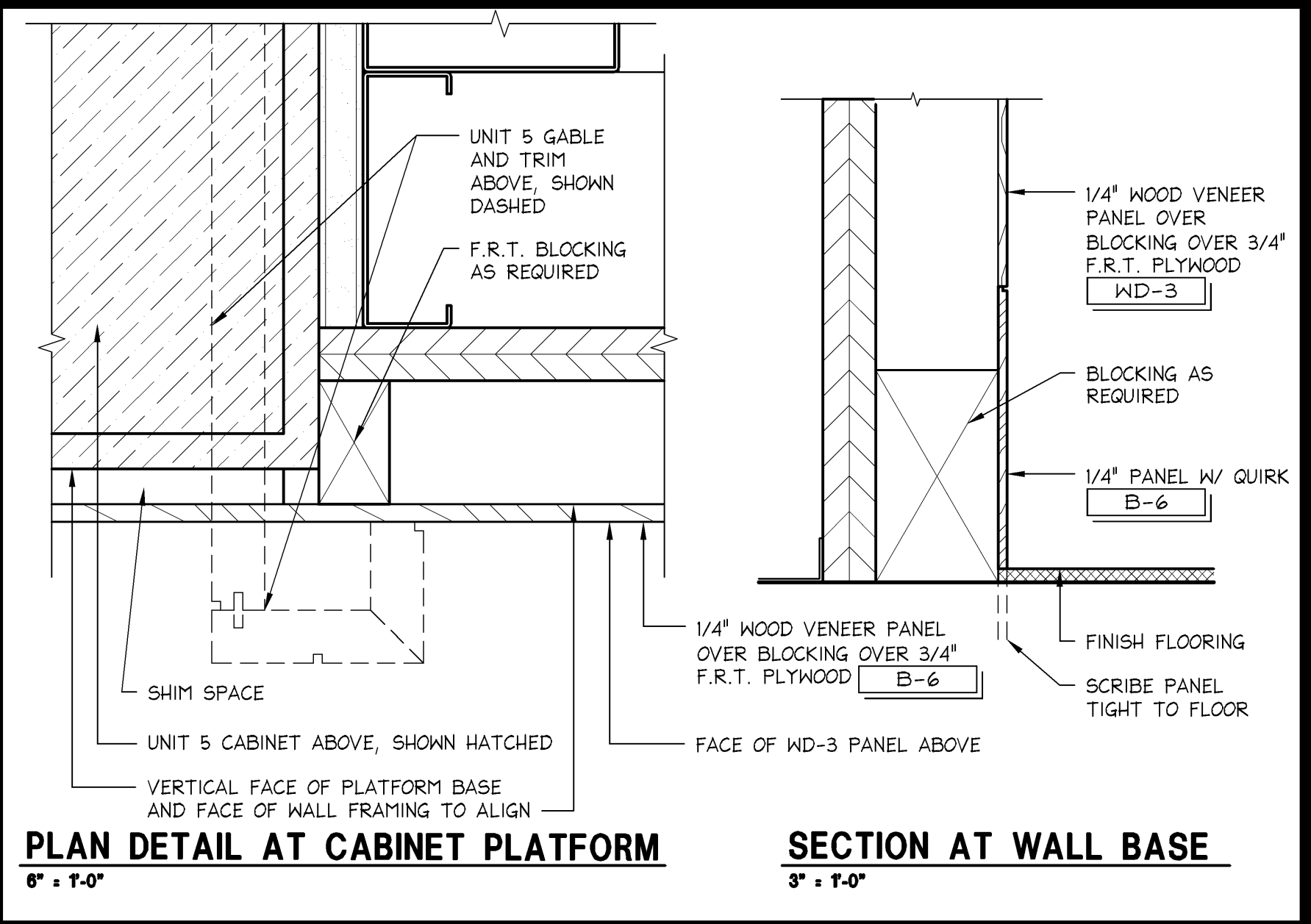
HEAD DETAIL @ SIDE

6" = 1'-0"
42D-A102-M00-DETL
01.27.12



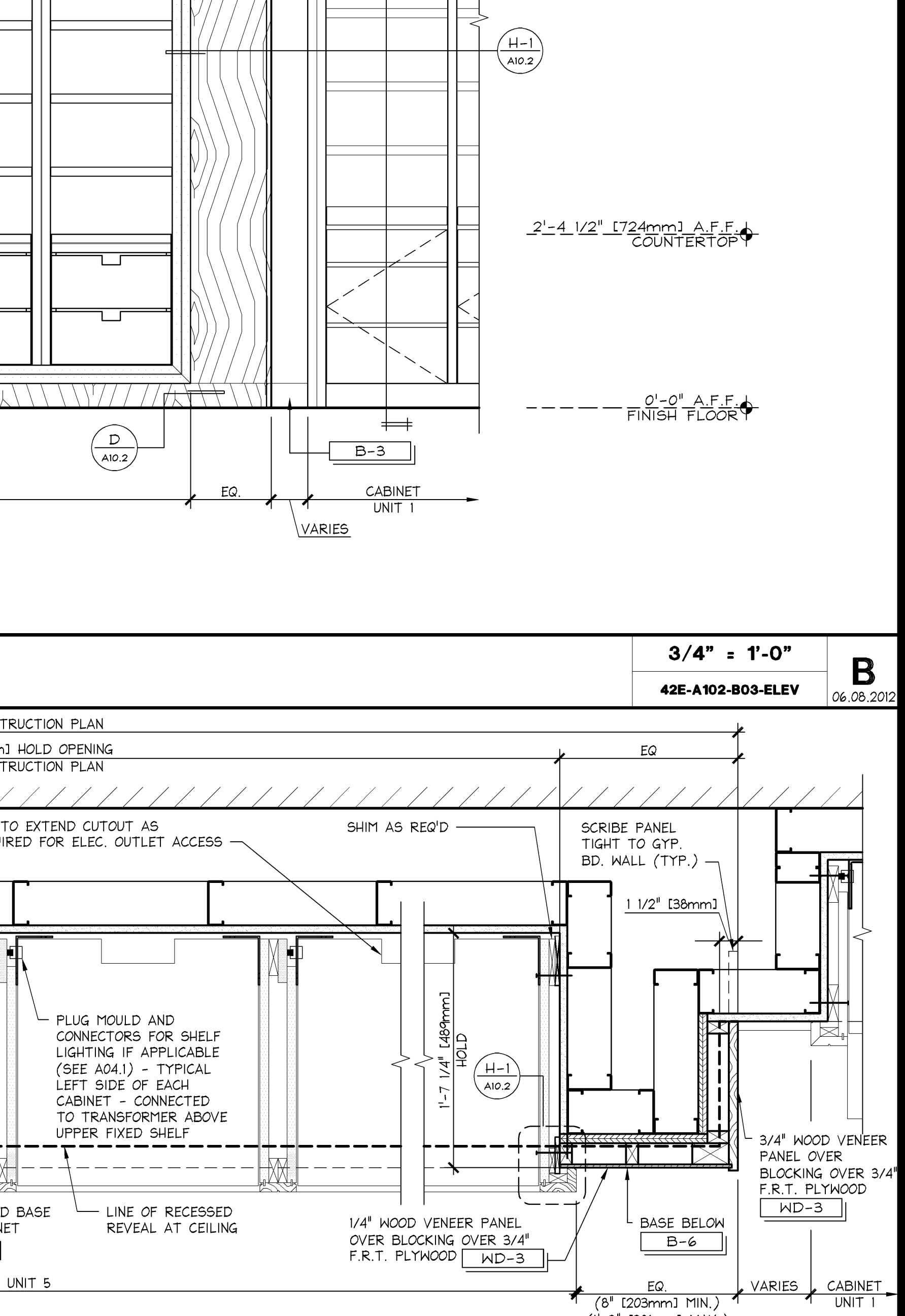
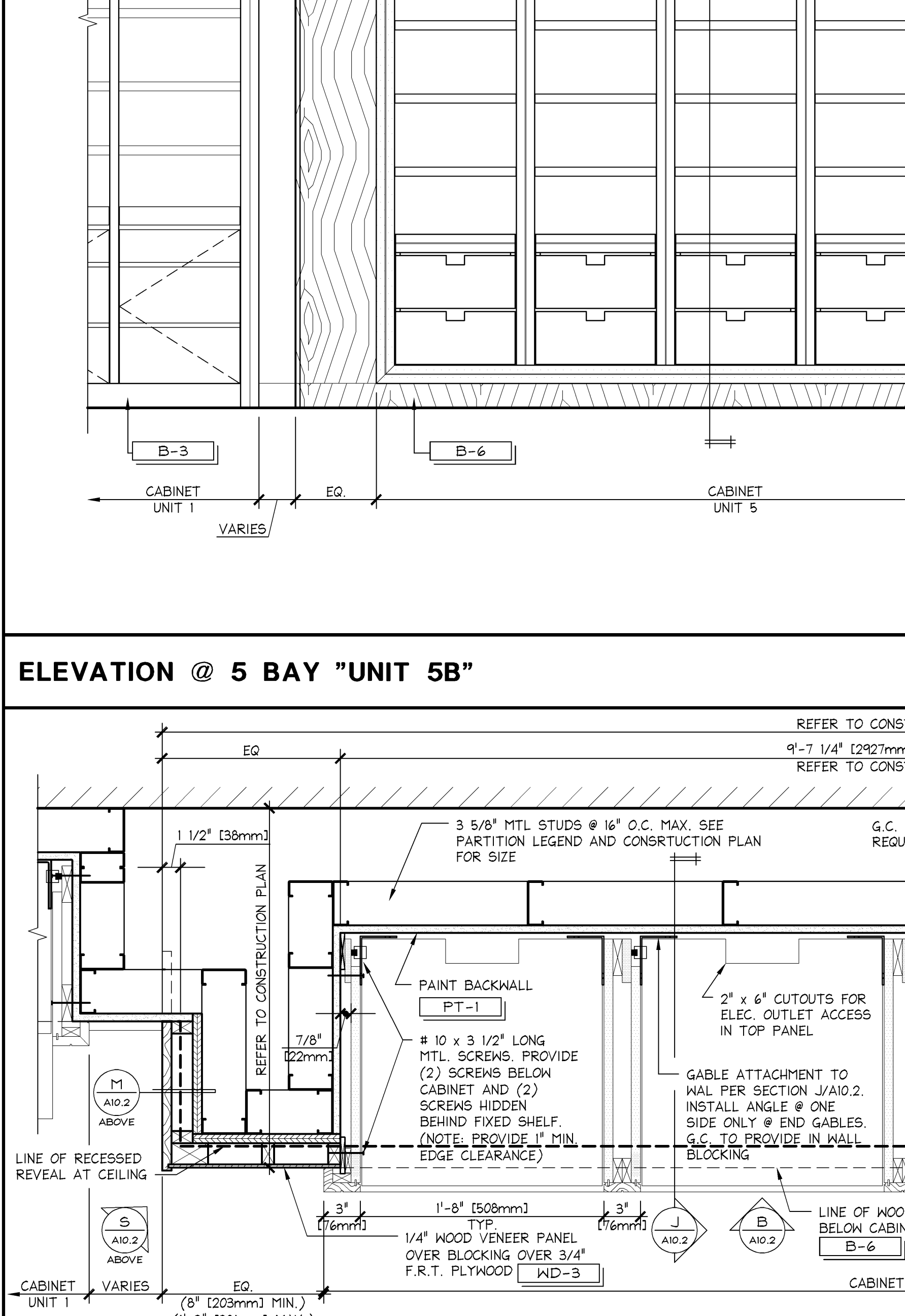
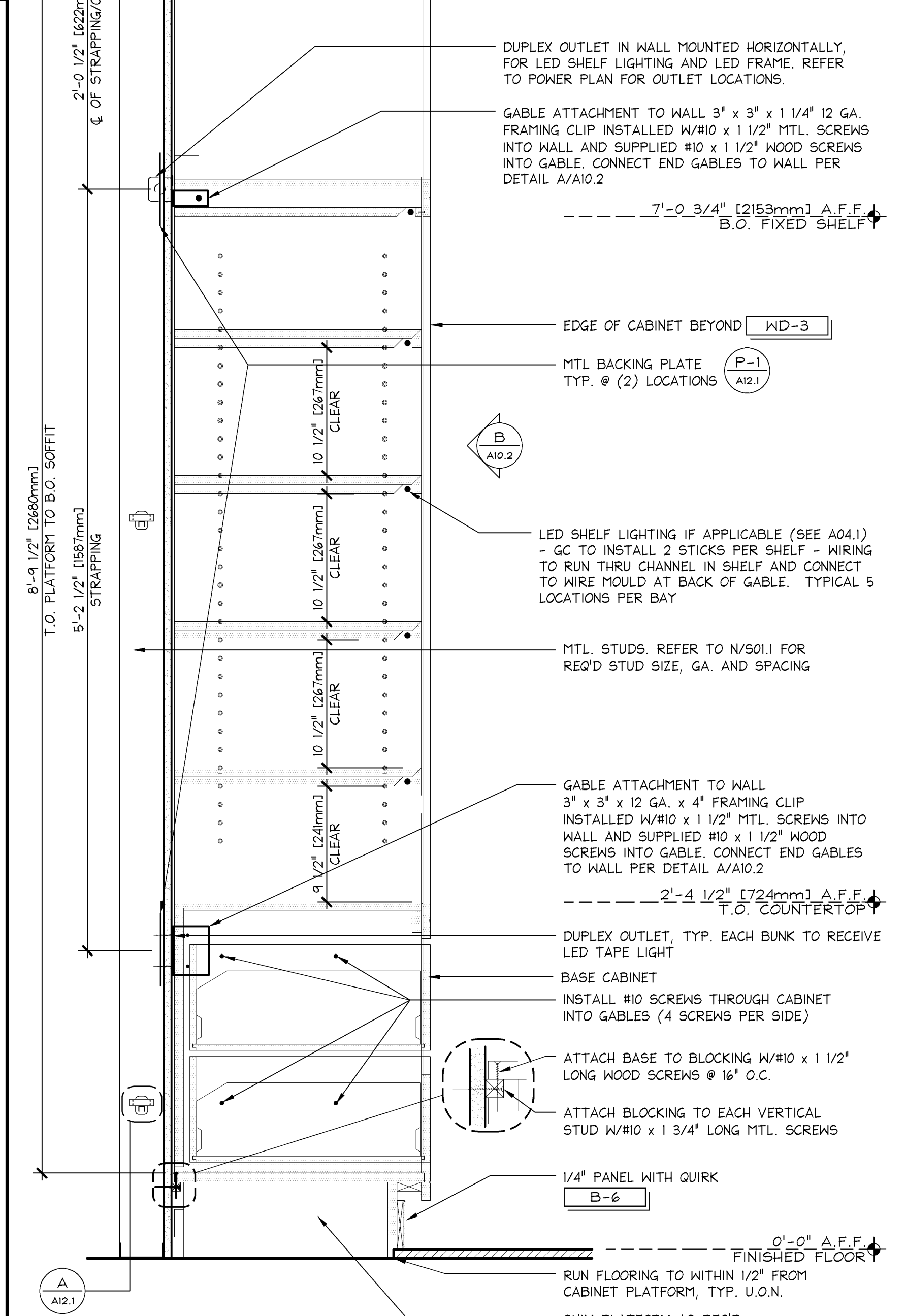
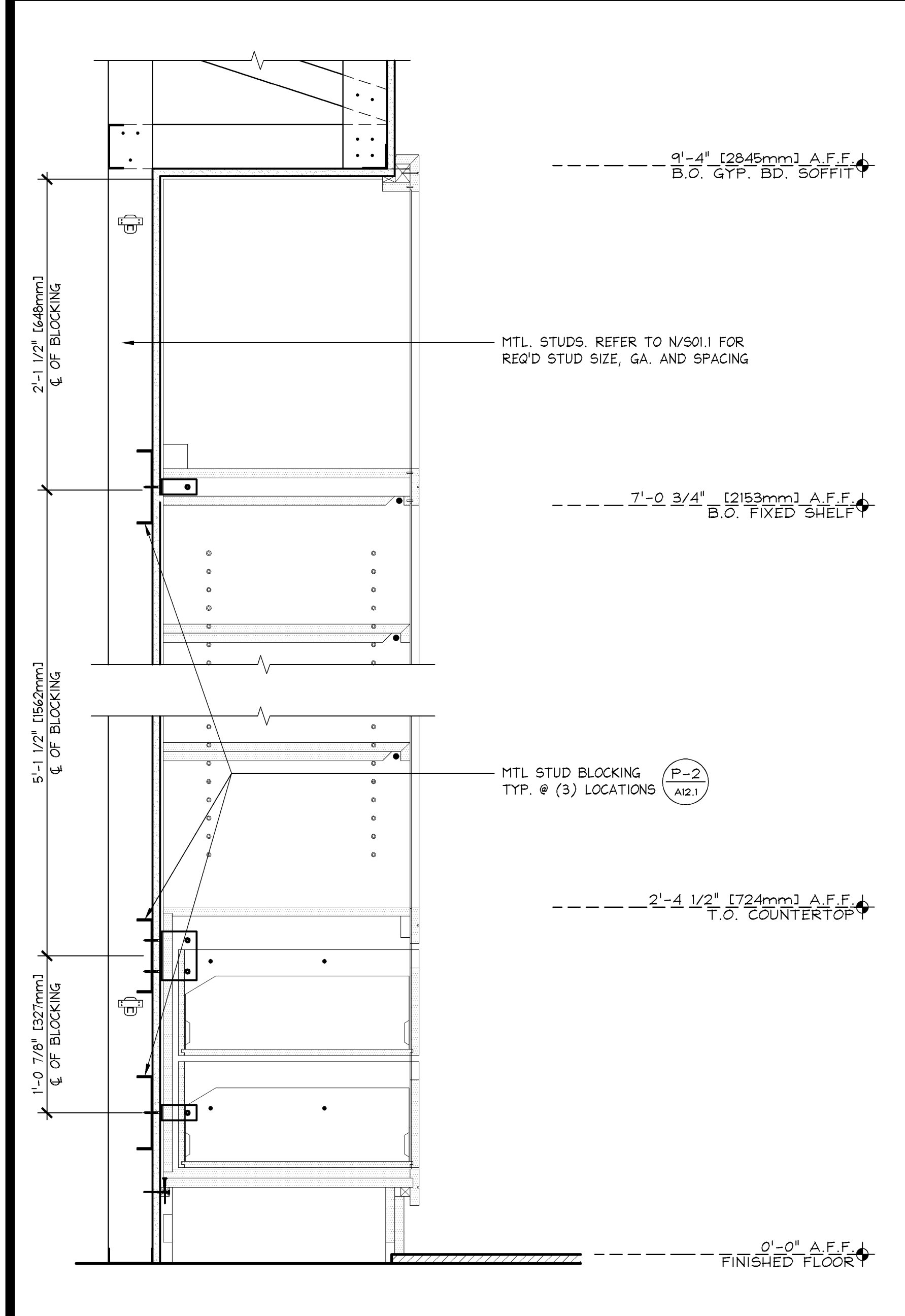
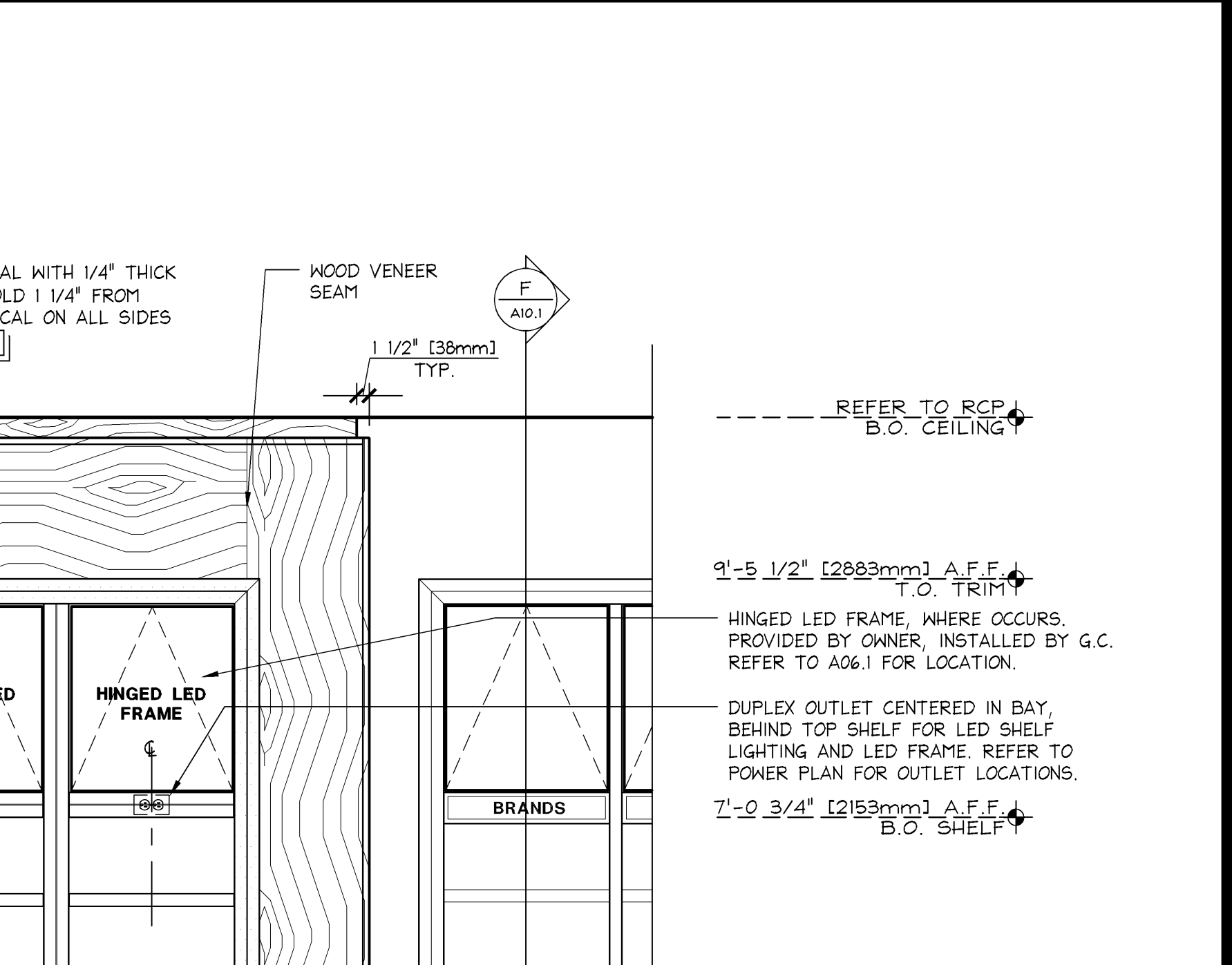
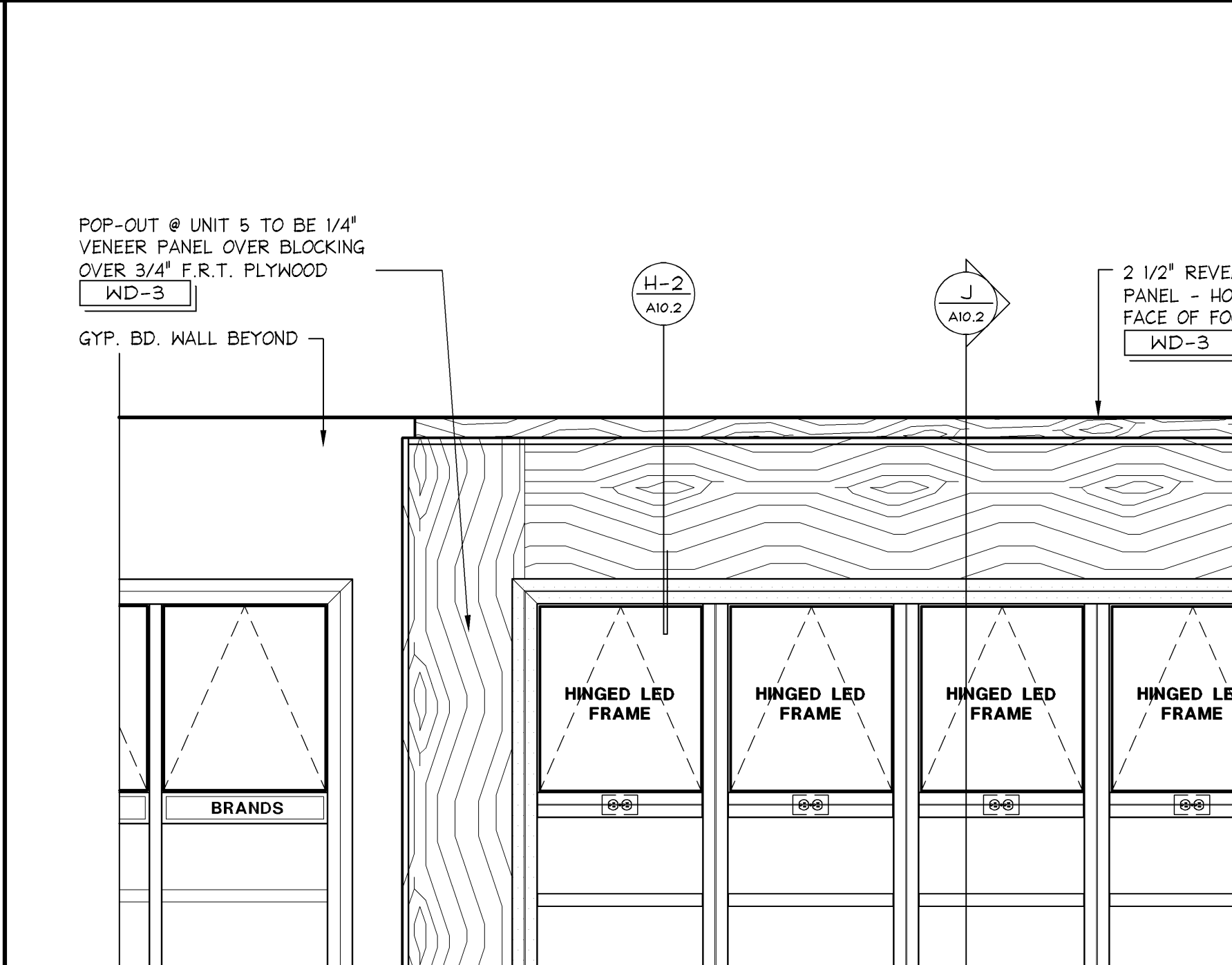
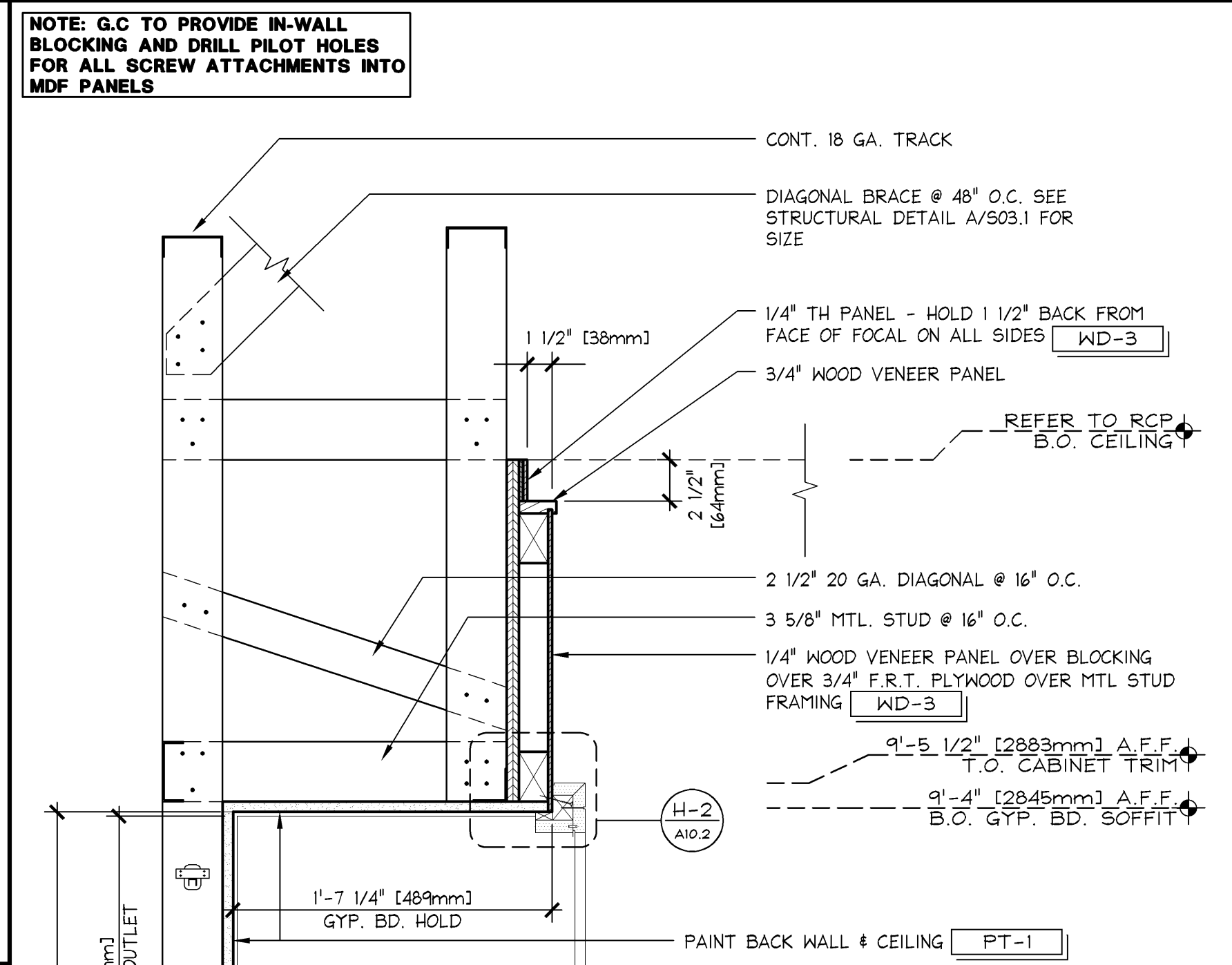
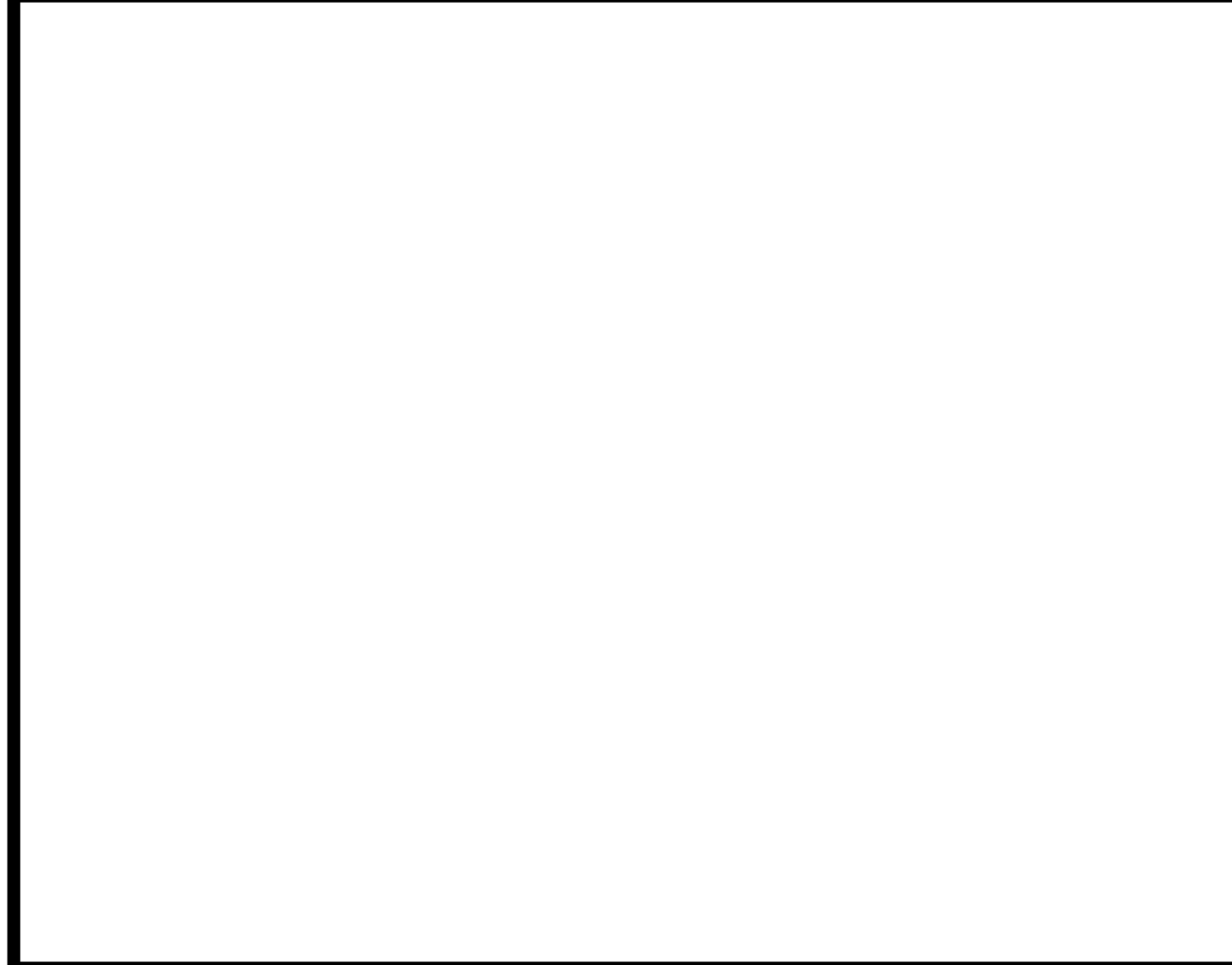
"UNIT 5B / 5C" TRIM DETAILS

6" = 1'-0"
42D-A102-M00-DETL
01.27.12



BASE DETAIL @ "UNIT 5B / 5C"

VARIES
42D-A102-D01-DETL
01.28.11



"UNIT 5" SEISMIC ADDITIONS
(HIGH SEISMIC DESIGN CAT D, E & F)

1 1/2" = 1'-0"
42S-A102-M00-SECT
01.27.2012

SECTION @ "UNIT 5B"

1 1/2" = 1'-0"
42S-A102-J02-SECT
01.27.12

ELEVATION @ 5 BAY "UNIT 5B"

3/4" = 1'-0"
42E-A102-B03-ELEV
06.08.2012

ENLARGED PLAN @ 5 BAY "UNIT 5B"

1 1/2" = 1'-0"
42D-A102-A05-DETL
01.27.2012

Shremshock Architects, Inc.
6130 S. Sunbury Rd., Westerville, OH 43081
t: 614 545 4550 | f: 614 545 4555 | shremshock.com
Gerald S. Shremshock, Architect
Timothy J. Shremshock, Architect

limitedbrands

LIMITED STORE PLANNING, INC.
d/b/a STORE DESIGN & CONSTRUCTION
Three Limited Parkway • Columbus, Ohio 43230
Telephone: 614.415.7000 • Fax: 614.415.7349

24200161

BATH & BODY WORKS

THE GALLERIA II

SPACE INC. 15060 RD.
HOUSTON, TX 77056

PROJECT INFORMATION:

REQUIRED BY: DATE:

REVISIONS:

ELITE CONSTRUCTION GROUP
LAKE JACKSON, TX
PHONE: 979-285-5010
NOTE: THESE PRINTS HAVE BEEN
REDUCED BY 50 PERCENT SCALE
WILL BE 50 PERCENT OF WHAT IS
NOTED ON PLANS

DATE ISSUED: 3/7/14
DESIGNED BY: SB
DRAWN BY: JLH
CHECKED BY: RLW

PERIMETER CABINETRY DETAILS

DRAWING NUMBER:
A10.2

PKG 1+
14150
130940

FULL REMODEL
EASTON-G
00061216
A/E PROJECT #: